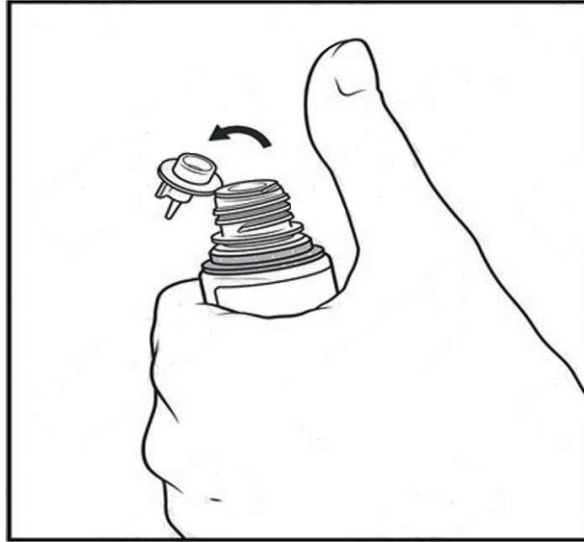


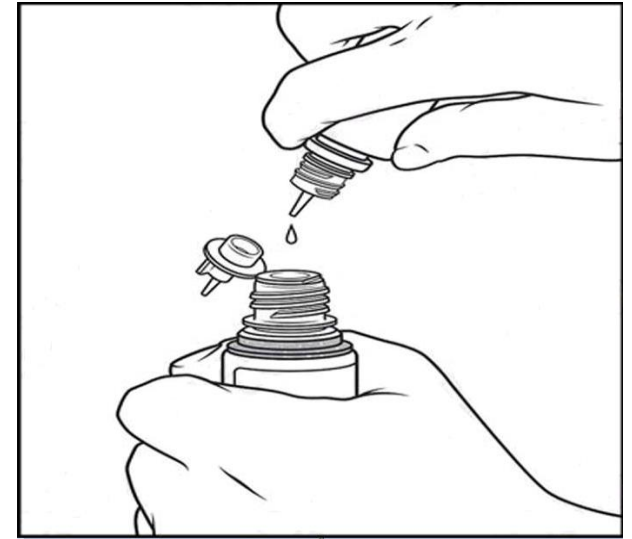
## Instructions for the refilling of the bottle with e-liquid



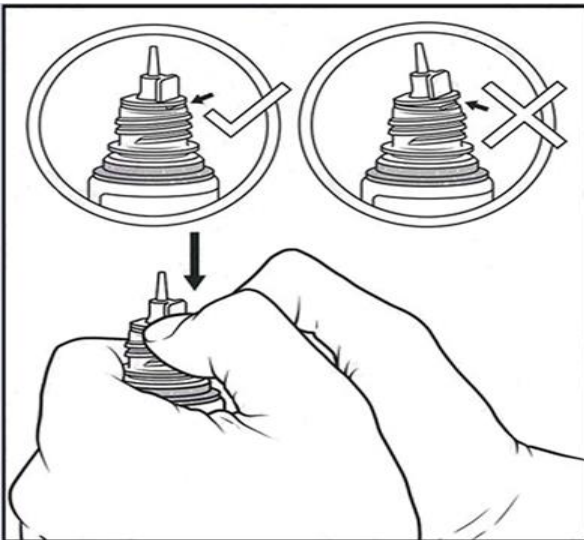
**STEP 1**  
UNSCREW THE CAPSULE BY PRESSING DOWN



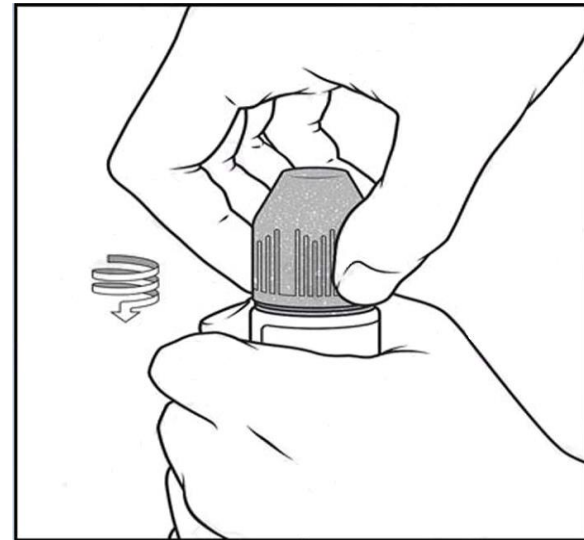
**STEP 2**  
OPEN THE NOZZLE BY PUSHING WITH A FINGER ON THE SUPPORT



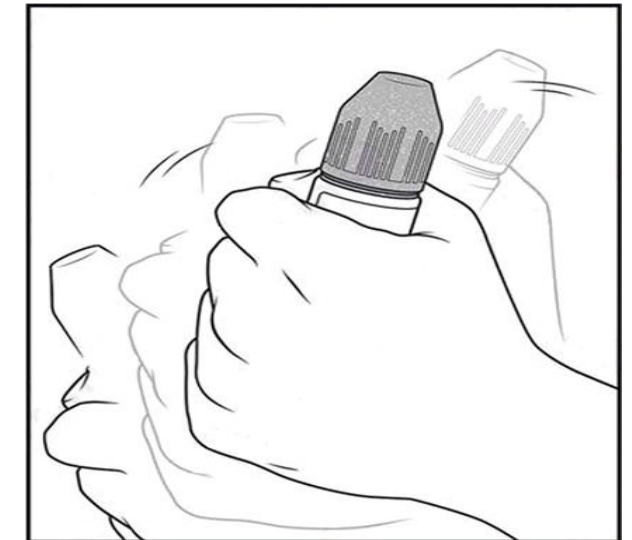
**STEP 3**  
REFILL THE BOTTLE WITH THE E-LIQUID



**STEP 4**  
CLOSE THE DISPENSER AGAIN BY PRESSING WITH TWO FINGERS NEXT TO THE SUPPORT. MAKE SURE THAT IT IS CLOSED CORRECTLY



**STEP 5**  
SCREW THE CAPSULE BY PRESSING DOWN. MAKE SURE THAT THE NOZZLE IS POSITIONED CORRECTLY.



**STEP 6**  
SHAKE THE BOTTLE FOR AT LEAST 30 SECONDS BEFORE USING